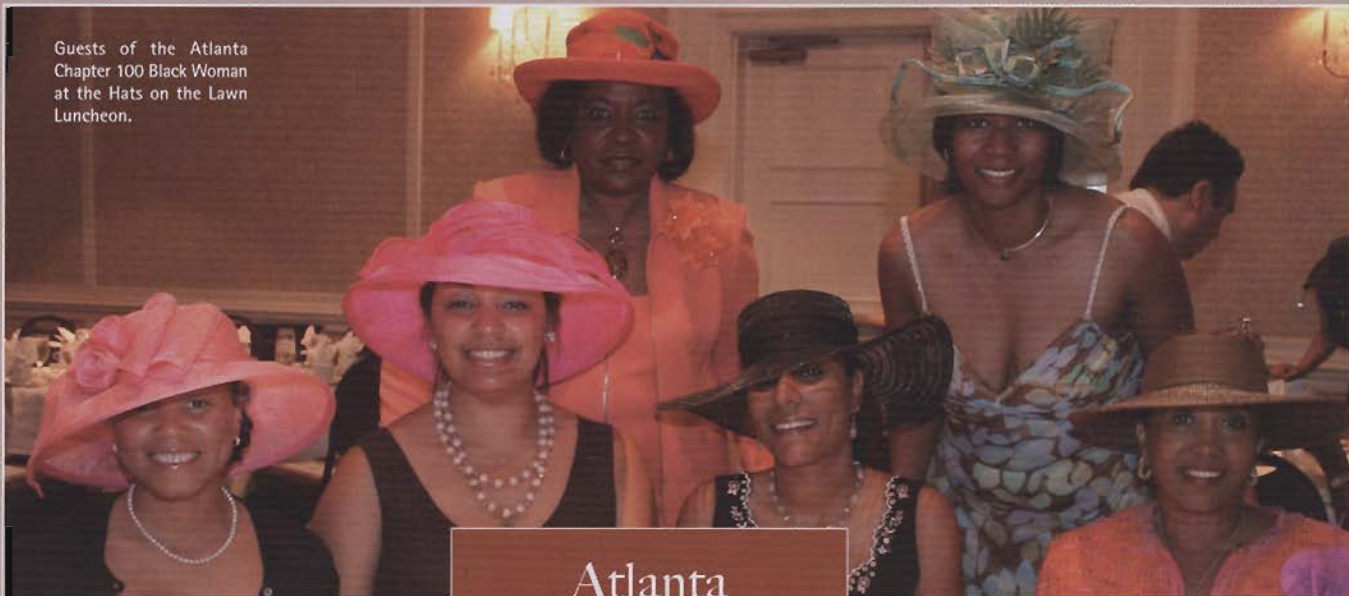


Guests of the Atlanta Chapter 100 Black Woman at the Hats on the Lawn Luncheon.



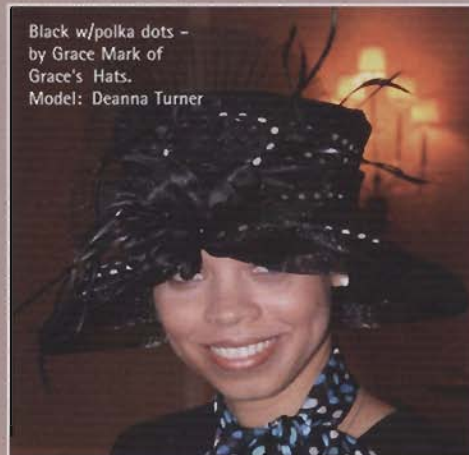
Atlanta Chapter 100 Black Women

Hats on the Lawn



Zebra hat by Grace Mark of Grace's Hats.
Model: Penny Foster

Black w/polka dots - by Grace Mark of Grace's Hats.
Model: Deanna Turner



LEFT: Commentator - Vernell Washington of Grand Diva Enterprises of Atlanta.
Model (RIGHT): Sharyn Ellison

Olive green & Aztec print by Linda's Lids Design of Atlanta.
Model: Angela Church



Peachy pink & creme basket weave by Grace Mark of Grace's Hats.
Model: Deanna Turner



Red lace show stopper by Grace Mark of Grace's Hats.
Model: Sharyn Ellison

